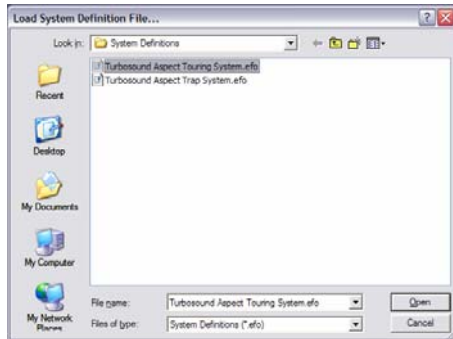


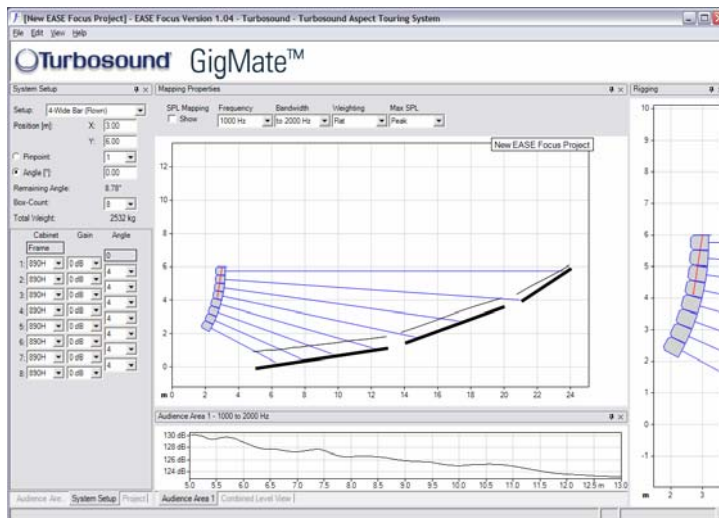
Running Turbosound GigMate / EASE Focus for the first time:

When you first start the program you must set the system file that it is to use. The installation files include two Turbosound Aspect System files as shown below:



Select either the Touring or Trap version of Aspect, you can change this later on.

You will now be presented with the GigMate main screen.



The screen is split into four main areas:

System Setup

The left hand side of the screen is where you define the system, auditorium and project. Tabs On the bottom of this window allow you to toggle between modes.

Mapping Properties

This is the main window which will display the system as configured in the System Setup window along with the audience areas and mappings.

Audience Area

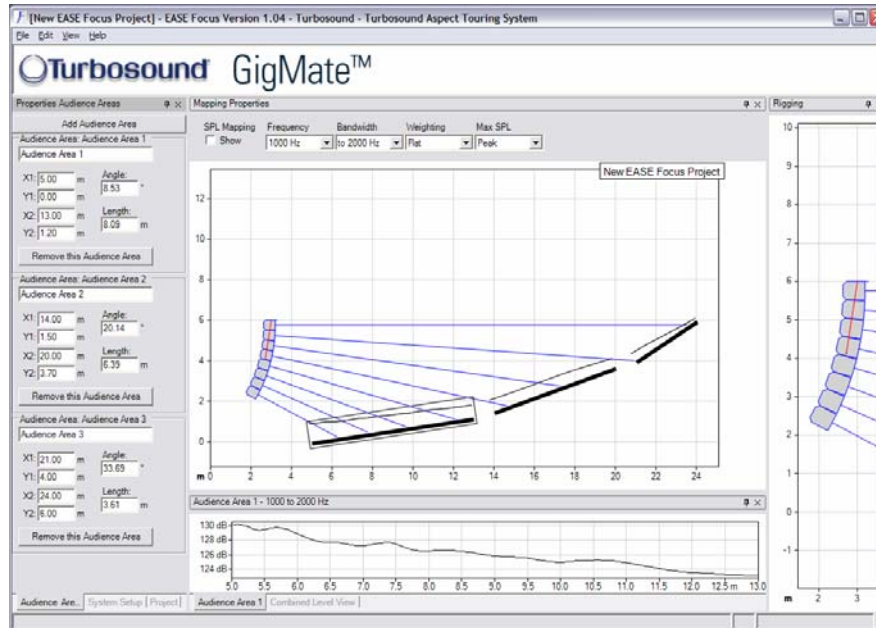
Beneath the main Mapping Properties window this graphically displays the SPL on each audience area, or across a combination of audience areas.

Rigging

The far right window shows the detail of the system configuration and is especially useful in larger venues where the speakers shown in the main window become very small.

Designing a system

To design a system begin by defining the venue/audience areas by clicking on the “Audience Area” tab in the bottom left of the screen.

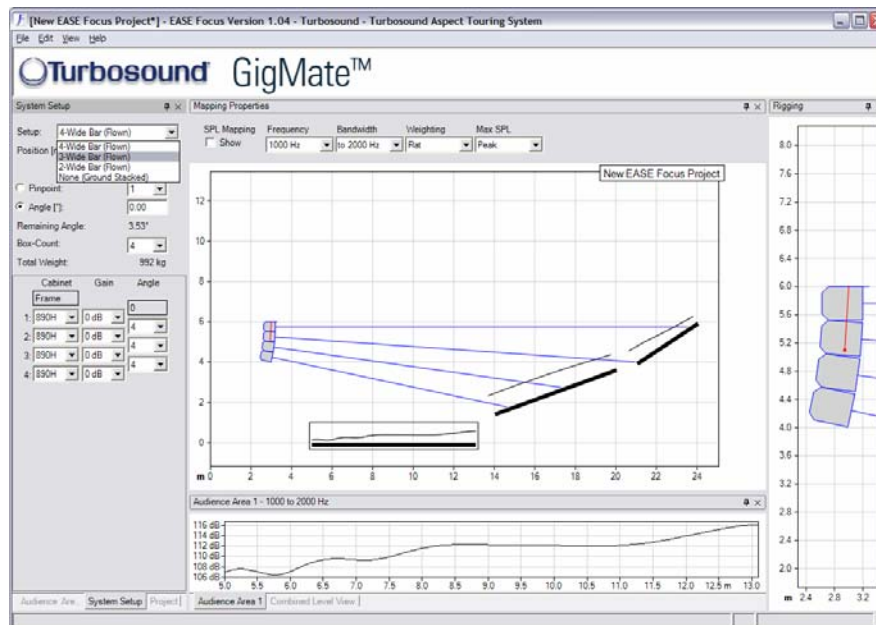


Within this window you can edit or remove existing audience areas, and create new ones.

There are two methods of defining an audience area. In either case you must define the X1/Y1 coordinate of the start of the area, you can then either enter the X2/Y2 points or its length and angle.

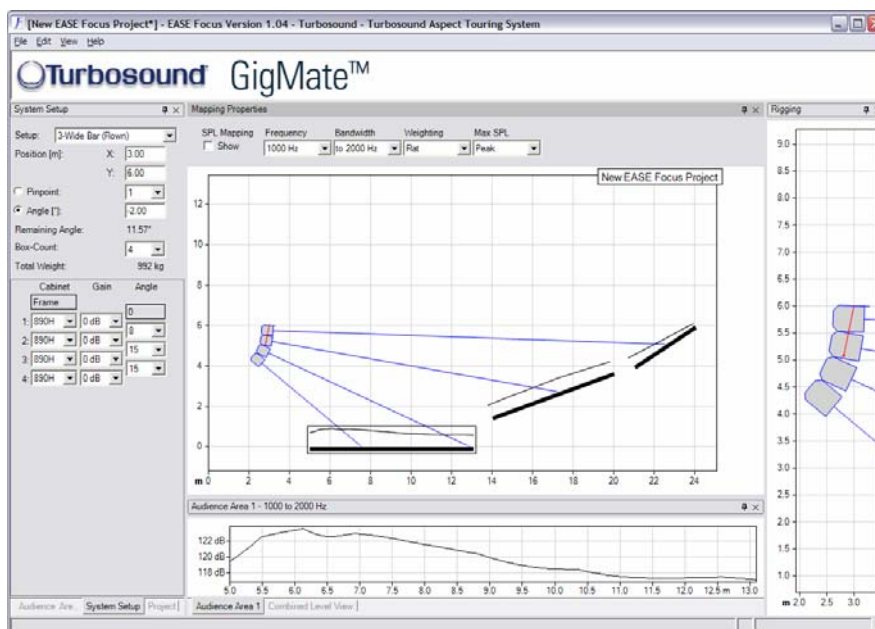
As you create audience areas they are shown graphically in the main window.

The next step is to design the loudspeaker array using the System Setup window. Select the System Setup tab in the bottom left of the screen and begin by choosing the desired flybar or groundstack in the drop down box at the top left of the window.

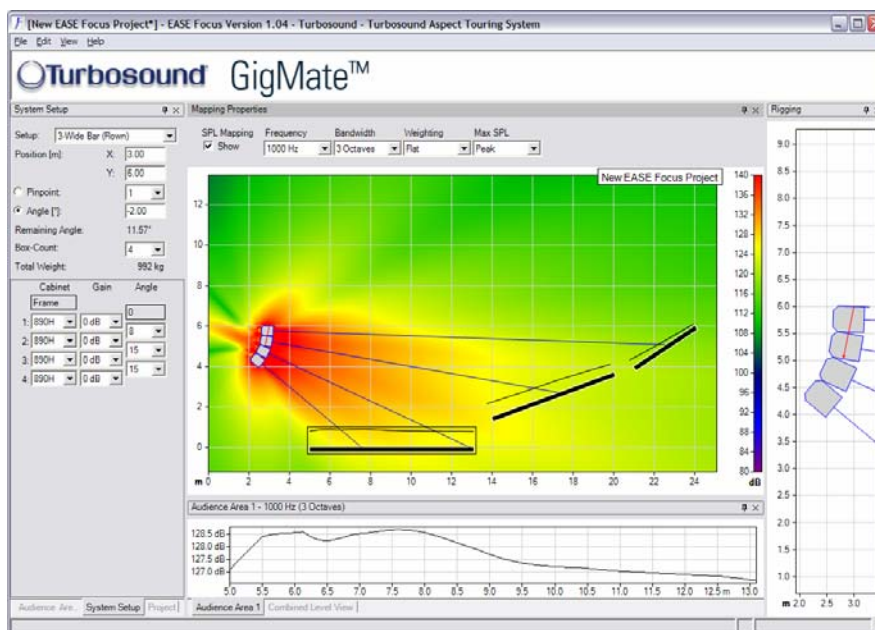


Now select the number of cabinets deep that you wish to hang or stack in the “Box Count” dropdown. Trim height, or PA wing height can now be set in the “Position” field.

If a mix of Low and High cabinets are to be used then select in the Cabinet window the type and location in the array of each box. The angle between cabinets can now be set in the "Angle" list. Each cabinet has an aiming line that can be used to determine the centre of each cabinet's dispersion. Adjust the trim height, top angle and intercabinet angle to achieve optimum coverage.



Now that the general design has been established the system performance must be mapped. At the top of the main window there is an "SPL Mapping" checkbox. This will map the system output at the frequency and bandwidth selected in the adjacent dropdown boxes. For most applications a 3 octave mapping gives realistic and useful data.



The Audience Area graph at the bottom of the window shows the SPL, as specified in the SPL Mapping lists, on the selected Audience Area. The selected area is highlighted in the main window and the graph is repeated onto op each area, Selecting the "Combined Level View" tab will show the SPL across all areas simultaneously.

Now that the system is mapped the intercabinet angles or row attenuation may be trimmed to provide the smoothest coverage. Typically the bottom row of the system will require some attenuation and should be on it's own "Amp way" to achieve this.

Changing the system

GigMate currently includes both the Aspect Touting TA-890 Series and the Trap TA-880L series. To switch between systems use Edit/Change System on the menu bar and select from the list.

